



The Rock Ranch



Third Grade Worksheets

Language Arts: ELA3W1c. and ELA3R2a.

Math: M3N2c. and M3N3g.

Science: S3L1a.

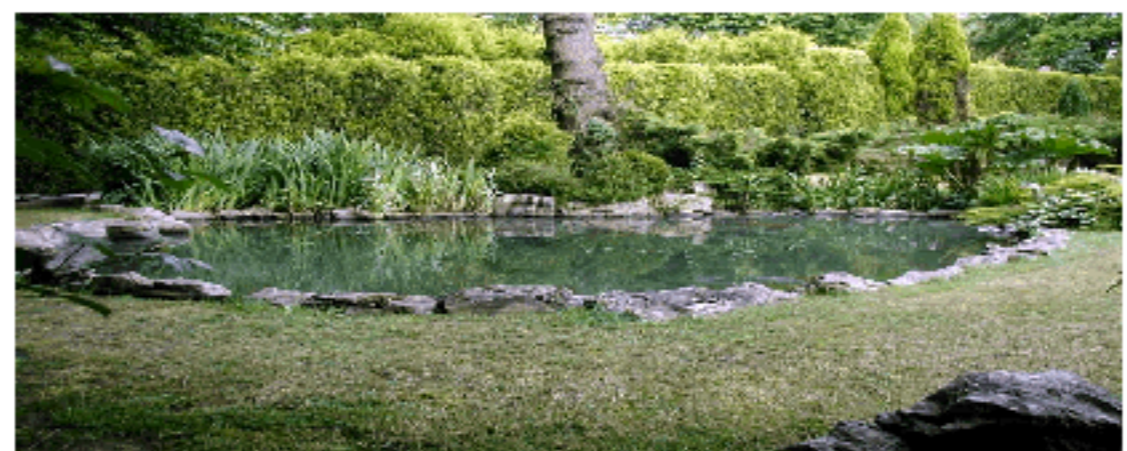
Social Studies: SS3E1a. - d.



Name _____

An ecosystem is an area where all the living and non-living things interact with and depend on each other.

After your visit to The Rock Ranch, write a summary of a pond's ecosystem.



www.therockranch.com



Name _____

snail turtle toad cattails waterlily duckweed geese
duck mallard dragonfly salamanders snake frogs

P V U X O D I T E U V L U J I
I D M O A Z O X F C L L S S U
V Z A F L V J N Q J Y P N L K
K N H O J L I A N S R A V I Z
F H D S T E T F A I K N D A P
W A T E R L I L Y E P U R T S
M D P Q H E N K O P C I A T C
J K L V T B D U H K R K G A X
J J X B U K G N W Q P A O C A
E M A U R U Y E A Q S B N V Z
L S X J T F E X E M E O F G B
Y W G P L D N Z Y S A A L H K
N I O M E L U N O G E L Y B C
Q Y S V S G O R F L W N A R U
C T M A L L A R D E Z J H S D



Name _____



Farmer Truett collected 37 haybales on Monday, 41 on Tuesday, and 19 on Wednesday. How many haybales were collected during these three days?

The Rock Ranch has 26 chickens, 63 bulls, and 11 goats. What is the total amount of farm animals?

Farmer Truett purchased 15 bags of feed in March, 57 bags during April and May, and 10 bags in June. How many bags were purchased for all four months?





Name _____

**71****x 5**

46**x 2**

33**x 6**

29**x 7**

91**x 4**

40**x 8**

28**x 9**

55**x 5**

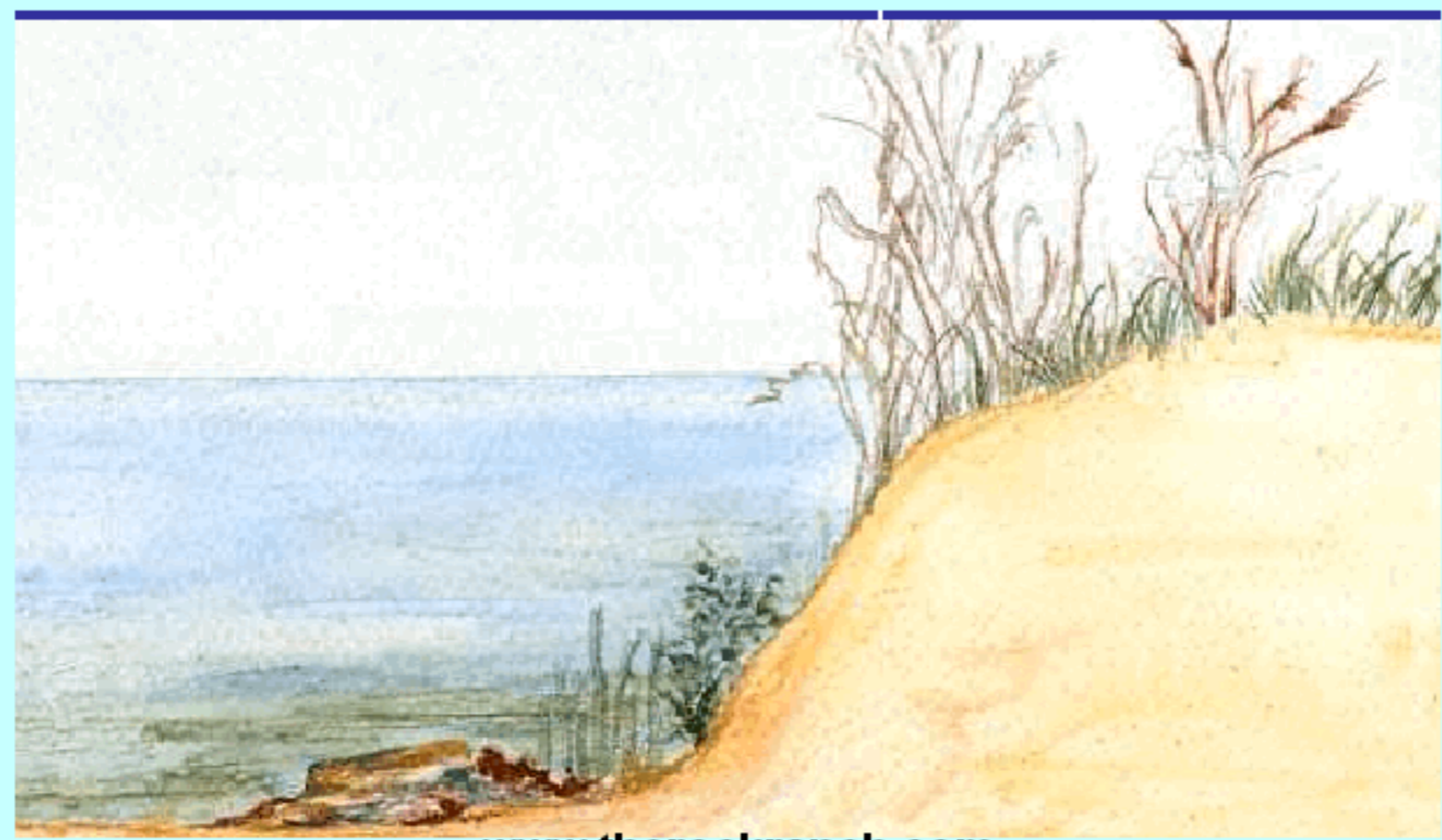




Who Lives Where In a Pond?

Cut the organisms out and glue in their habitats.

Name _____



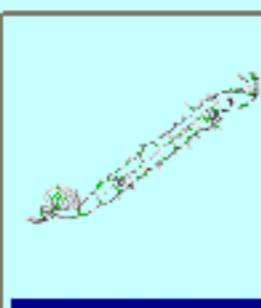
www.therockkranch.com



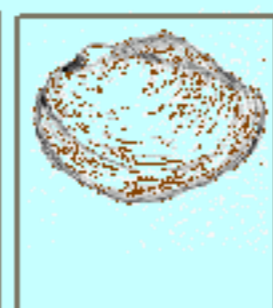
Greater
Water
Boatman



Pond
Skater



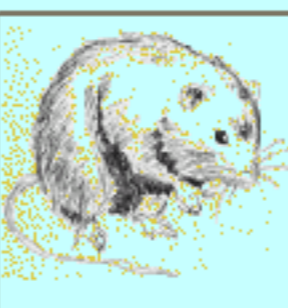
Phantom
Midge
Larva



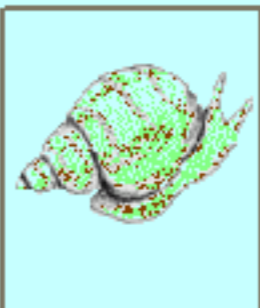
Swan
Mussel



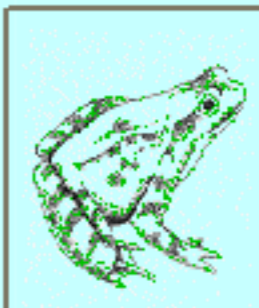
Flatworm



Water
Vole



Pond
Snail



Frog

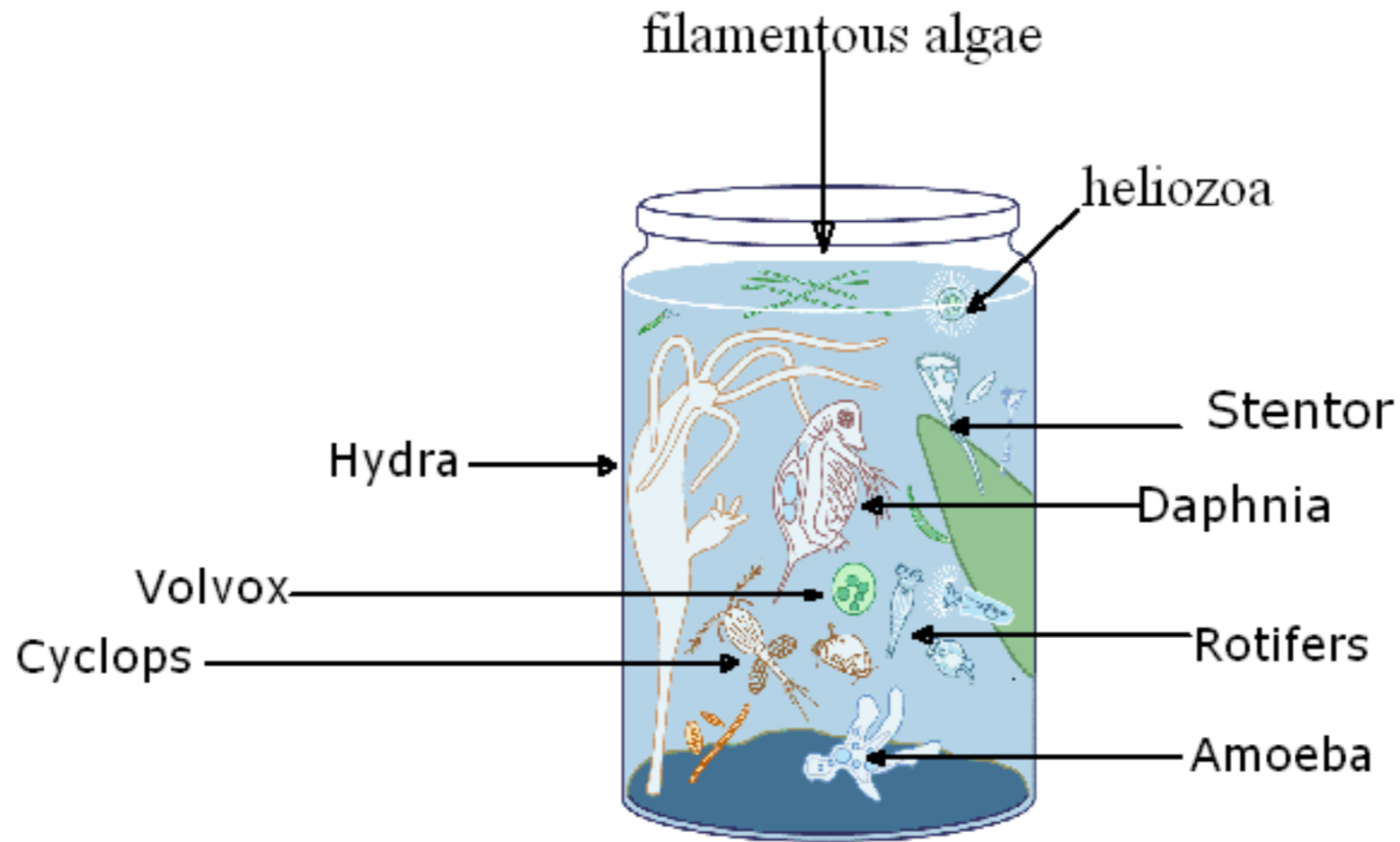


Dragonfly



Name _____

Choose a pond organism and list some of the characteristics (where it can be found, what part of the animal kingdom, etc.)





Name _____

You saw a variety of animals and listened to the importance of farming on your visit to The Rock Ranch. Write and illustrate a summary of the productive resources yielded from the animal and crop production.



Name _____

Productive resources include the natural resources (elements of the natural environment used to produce goods and services), **human resources** (people who produce goods and services), and **capital resources** (tools, machinery, infrastructure, and other manmade resources used to produce goods and services).

List the productive, human, and capital resources found at the Rock Ranch.

Productive Resources

Human Resources

Capital Resources